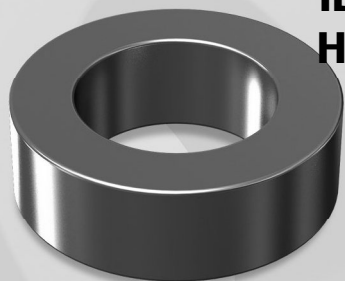


OD 777

OD 77.8mm / 3.063inch



ID 49.23mm
HT 12.70mm

Core Dimensions

		OD(max)	ID(min)	HT(max)
Before coating	(mm)	77.80	49.23	12.70
	(inch)	3.063	1.938	0.50
After coating (parylene-C)	(mm)	78.90	48.0	13.97
	(inch)	3.108	1.888	0.550

Magnetic Dimensions

Cross Section (A)	Path Length (l)	Window Area (Wa)	Volume (V)
1.770cm ²	20.0cm	17.99cm ²	34.770cm ³
0.274in ²	7.72in	3,550,000cmil	2.122in ³

Available Cores

MPP	Part No.			AL (mH/N ²)	Perm. (μ)
	High Flux	Sendust	Mega Flux®		
CM777026	CH777026	CS777026	CK777026	30	26
CM777060	CH777060	CS777060	CK777060	68	60
-	-	CS777075	CK777075	85	75
-	-	CS777090	CK777090	102	90
CM777125	CH777125	CS777125	-	142	125
-	-	-	-	-	147
-	-	-	-	-	160
-	-	-	-	-	173
-	-	-	-	-	200

Winding Information

AWG Wire No.	Dia(cm)	Single Layer		AWG Wire No.	Dia(cm)	Single Layer	
		Turn	Rdc,Ω			Turn	Rdc,Ω
10	0.267	53	0.0113	19	0.0980	150	0.258
11	0.238	60	0.0162	20	0.0879	168	0.364
12	0.213	67	0.0228	21	0.0785	188	0.514
13	0.190	76	0.0325	22	0.0701	211	0.732
14	0.171	84	0.0454	23	0.0632	235	1.02
15	0.153	95	0.0646	24	0.0566	263	1.30
16	0.137	106	0.0912	25	0.0505	295	1.84
17	0.122	119	0.129	26	0.0452	330	2.61
18	0.109	134	0.183	27	0.0409	365	3.62

Single layer winding with 1 inch leads

AL vs NI Curve (60μ, 125μ)

