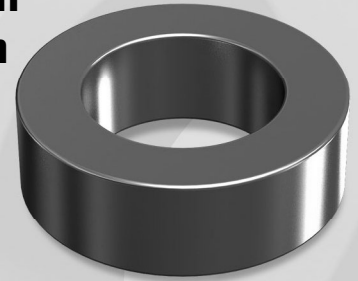


OD234

OD 23.57mm / 0.928inch

**ID 14.40mm
HT 8.89mm**



Core Dimensions

		OD(max)	ID(min)	HT(max)
Before coating	(mm)	23.57	14.40	8.89
	(inch)	0.928	0.567	0.350
After coating (Epoxy)	(mm)	24.30	13.77	9.70
	(inch)	0.956	0.542	0.382

Magnetic Dimensions

Cross Section (A)	Path Length (l)	Window Area (Wa)	Volume (V)
0.388cm ²	5.88cm	1.49cm ²	2.2814cm ³
0.061in ²	2.32in	293,800cmil	0.1415in ³

Winding Information

AWG Wire No.	Single Layer Dia(cm)	Turn	Rdc,Ω	AWG Wire No.	Single Layer Dia(cm)	Turn	Rdc,Ω
12	0.213	15	0.00307	21	0.0785	46	0.0620
13	0.190	17	0.00429	22	0.0701	52	0.0874
14	0.171	20	0.00595	23	0.0632	58	0.1210
15	0.153	22	0.00832	24	0.0566	65	0.170
16	0.137	25	0.0116	25	0.0505	73	0.238
17	0.122	29	0.0162	26	0.0452	81	0.336
18	0.109	32	0.0227	27	0.0409	91	0.465
19	0.0980	36	0.0318	28	0.0366	101	0.657
20	0.0879	41	0.0443	29	0.0330	112	0.901

Single layer winding with 1 inch leads

Available Cores

MPP	Part No.			AL (nH/N ²)	Perm. (μ)
	High Flux	Sendust	Mega Flux®		
CM234026	CH234026	CS234026	CK234026	22	26
CM234060	CH234060	CS234060	CK234060	51	60
-	-	CS234075	CK234075	63	75
-	-	CS234090	CK234090	76	90
CM234125	CH234125	CS234125	-	105	125
CM234147	CH234147	-	-	124	147
CM234160	CH234160	-	-	135	160
CM234173	-	-	-	146	173
CM234200	-	-	-	169	200

AL vs NI Curve (60μ, 125μ)

